

SOTAR BLIXTLEDEN 11 KM



Terrain: demanding, steep, rocky, rooty, duck boards
Markings: orange
Recommended shoes: boots

Nature: viewpoints, pine, spruce, lake, moore,
Version: 2023-04-13

Summary

Circular hiking trail of 11 km starting at Jössestugan, Rackstad. A varied, scenic trail through mixed coniferous forests, stretches of old pines, over hilltops and along streams, a mire and a lake where white water lilies bloom in June-July.

The climb across Gallberget and Göpugnen/Gôpommen is steep, as well as the north passage down to Jössestugan. The ground varies from needle covered paths, duck boards, to roots and rocks. A short passage west of Lake Agvattnet is somewhat wet.

The path is well visible and marked with orange on trees or posts.

You will find elevation profiles at the end of this document. A map is available for download under Documents.

There is normally mobile coverage throughout the trail.

Suggested starting point

Jössestugan, latitud 59.692706, longitud 12.679481

There is a spacious parking space.

The bus connection 111 Arvika-Perserud passes the stop "Myren/Rackstadskogens naturreservat" after approximately 8 km from Arvika. For time tables, visit [Värmlandstrafik \(varmlandstrafik.se\)](http://varmlandstrafik.se).

Description for counterclockwise direction

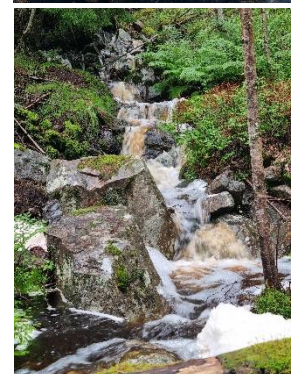
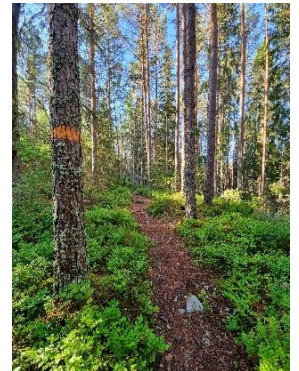
From the parking space there is a common start for all three trails Gallbergsleden, Djupdalsleden and Sotar Blixtleden. After the first hill signs will guide you. The Sotar Blixtleden signs point in a counterclockwise direction and head out south east on a rocky and rooty surface. The tall spruce forest does not let much light through to the ground, which gives the sensation of a room to the sound of rippling streams. Duck boards facilitates crossing wet areas and streams. As the altitude increases, pines and needle covered path take over.

Around Gallberget, the ground under the old pines is covered by blueberries. On the top there is a bench table with a beautiful view over Lake Racken and its surrounding. After Gallberget, Sotar Blixtleden diverges east.

Duck board take you across the mire Svartmossen, to a somewhat dense forest of around 100 meters, before a wider descent takes you to a gravel road. The trail follows this road a few hundred meters north before going west to round the lake.

The stretch west of Lake Agvattnet goes alongside a stream, making the area a bit wet. Duck board facilitate, but boots are recommended due to this passage.

You reach the Sotar Blixt Rock/Sotar Blixtstenen where there is an information sign about the character giving the trail its' name. Please note the sharp



SOTAR BLIXTLEDEN 11 KM



Terrain: demanding, steep, rocky, rooty, duck boards
Markings: orange
Recommended shoes: boots

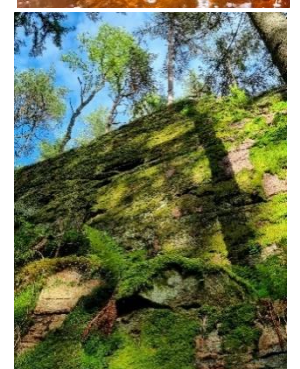
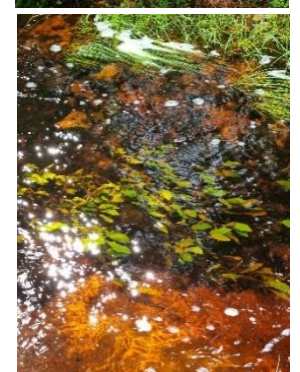
Nature: viewpoints, pine, spruce, lake, moore,
Version: 2023-04-13

change of direction thereafter, as the trail bends from northwest to straight the south. There are orange marking and signs to point you to Göpugnen/Göpommen, where Lake Racken will be visible on your west side. After the steep climb up the ridge, the trail heads west-south west about 500-600 meters, before the final stretch south.

Closing in on Jössestugan the descent is also quite steep. By the foot of the mountain you have a fascinating view of the lush vegetation on the mountain wall - a worthy finish of this beautiful trail.

Elevation profile of Sotar Blixtleden

For an interactive map showing altitudes of different positions along the trail, look up the trail and mark it at naturkartan.se. Click on the circled symbol, positioned to the right of the web site. Move the cursor across desired area to get the altitude.



Photos:

1. Close to the top of Gallberget, through old pine forest and blueberries.
2. Resting place on the top of Gallberget.
3. Forest stream after rain
4. Duck board passage across the mire Svartmossen
5. Cloudberries begin to ripen on Svartmossen (beginning of July)
6. Little islands in Lake Agvattnet
7. White water lilies on Lake Agvattnet (beginning of July)
8. Alongside the lake, the trail surface is soft and needle covered.
9. Forest stream west of the lake.
10. Lush vegetation on the mountain wall next to Jössestugan.